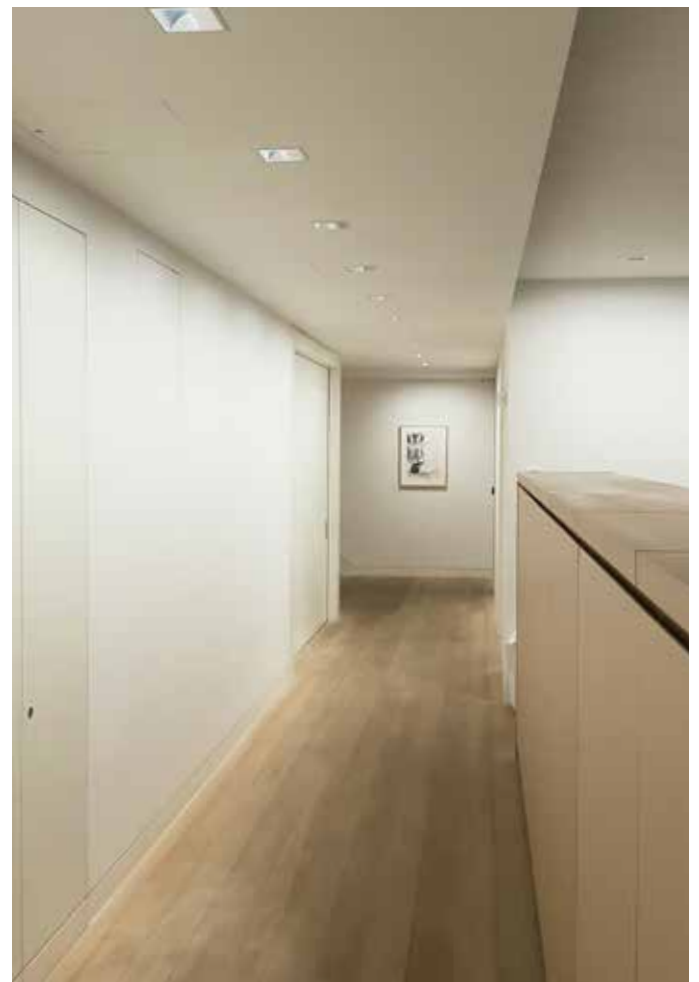


Skarstedt Gallery SW1

A successfully completed complex HVAC system for this prestigious private art gallery close to the iconic Ritz Hotel.

The gallery regularly shows Old Masters worth in excess of £25m so museum-grade climate control was essential to several areas. The brief was to provide close-control temperature and humidity in the close-controlled galleries at $\pm 1^{\circ}\text{C}$ and $\pm 7\% \text{RH}$ all year round with partial redundancy, and standard air-conditioning and heat-recovery ventilation to the rest of the spaces.

The project was further complicated by the building structure being far from ideal for the required purpose. Calibre installed chilled-water close control units with humidifiers and heaters, and bespoke acoustic plenums above and below to minimise noise in the gallery; we also had to provide advice on the construction methods of the special plant room containing the units, which was complicated by the fact that the floor slab under the units was not strong enough to support the acousticians' preferred wall construction. ►



Skarstedt Gallery SW1

► Supply air was provided via low-impact linear bar grilles, and return air utilised the reveal of a large sliding door and a bespoke return void through the reception desk which greatly reduced the aesthetic impact on the gallery space. The external plant was especially problematical as the only space big enough to house the twin low-noise chillers was in vaults under the pavement, with limited space for airflow.

The Gallery is a remarkable space, with enormously high ceilings and beautiful wooden floors, and the skilful concealment of the HVAC system ensures that it discreetly enhances the visitor experience.

